



HARRY KRAMM

PERSONAL REAL ESTATE CORPORATION

ENGEL & VÖLKERS

778.995.7224

harry.kramm@evrealestate.com

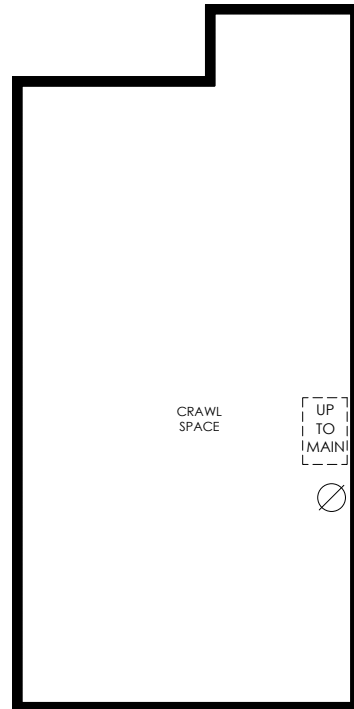
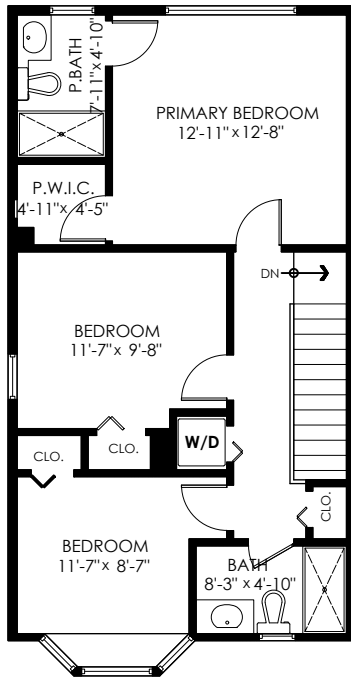
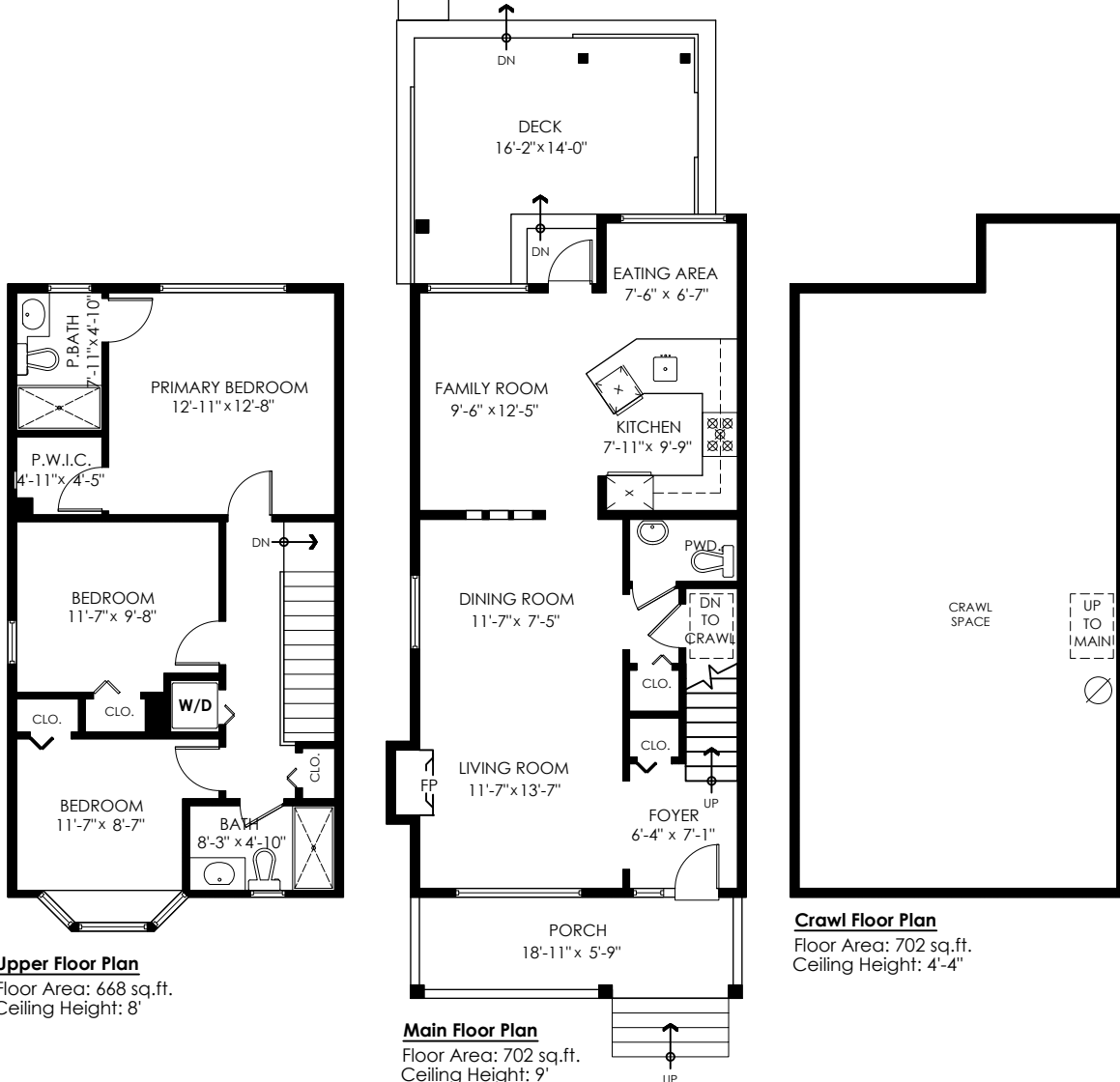
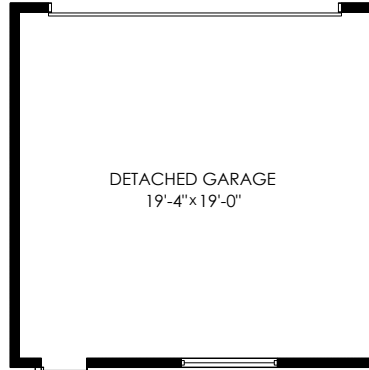
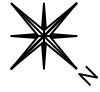
www.harrykramm.com

Main Floor:	702 sq.ft.
Upper Floor:	668 sq.ft.
Total Livable:	1,370 sq.ft.

Crawl Space:	702 sq.ft.
Grand Total:	2,072 sq.ft.

Detached Garage:	408 sq.ft.
Deck:	202 sq.ft.
Porch:	109 sq.ft.
Total Extras:	719 sq.ft.

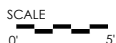
158 Dockside Ct New Westminster



Upper Floor Plan
Floor Area: 668 sq.ft.
Ceiling Height: 8'

Main Floor Plan
Floor Area: 702 sq.ft.
Ceiling Height: 9'

Crawl Floor Plan
Floor Area: 702 sq.ft.
Ceiling Height: 4'-4"



MEASURED ON: (2026-07-06)

info@pixlworks.com www.pixlworks.com 1 855 749 5957



E&O Insured. Total square foot calculated to gross unit area. SQFT based on interior measurements to exterior walls, not taken from original blueprints, may include unfinished area. This is for marketing purposes only and is not intended for architectural/construction use. All details, sizes & placements should be considered approximate within +/- 2% tolerance.